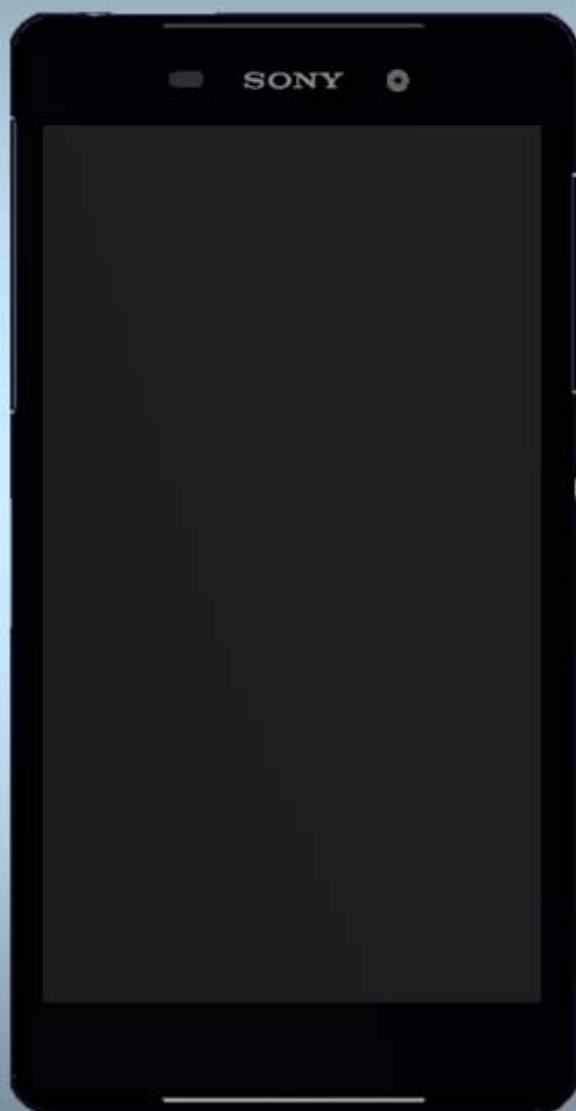


SONY

make.believe

Troubleshooting Guide

- mechanical -



Xperia™ Z2

D6502, D6503, D6543, L50w

CONTENTS

1	Problem Areas	4
1.1	Power	4
1.1.1	Will not power on or will switch off randomly.....	4
1.2	Keyboard & Switch.....	6
1.2.1	Back, Home and Multitask Keys.....	6
1.2.2	Volume Key	6
1.2.3	On/Off Key	7
1.2.4	Camera Key.....	8
1.3	Touch Screen	9
1.3.1	Touch Screen malfunction.....	9
1.4	Display	10
1.4.1	Graphics & Illumination	10
1.5	LED/Illumination.....	12
1.5.1	LED/Illumination	12
1.6	Speaker / Stereo Speaker	13
1.6.1	Bottom Speaker	13
1.6.2	Top Speaker	14
1.7	Earphone	15
1.7.1	Ear Speaker.....	15
1.8	Microphone.....	16
1.8.1	Primary Microphone.....	16
1.8.2	Secondary Microphone	18
1.9	Vibrator	19
1.9.1	Vibrator not generating alerts	19
1.10	Camera.....	20
1.10.1	Main Camera	20
1.10.2	Secondary Camera defects.....	21
1.11	Flash LED	22
1.11.1	Flash LED not flashing.....	22
1.12	Antenna Switching.....	23
1.12.1	Antenna Switching fails	23
1.13	Bluetooth and WLAN	24
1.13.1	Bluetooth or WLAN connection failure.....	24
1.14	NFC	25
1.14.1	NFC malfunctions.....	25
1.15	GPS	26
1.15.1	GPS malfunctions.....	26
1.16	Compass.....	27
1.16.1	Compass fails	27
1.17	Accelerometer	28
1.17.1	Accelerometer test fails	28
1.18	Gyroscope	28

1.18.1 Gyroscope test fails	28
1.19 Ambient Light Sensor	29
1.19.1 Light Sensor malfunctions	29
1.20 Proximity Switch	30
1.20.1 Proximity Switch malfunctions	30
1.21 Pressure Sensor.....	31
1.21.1 Pressure Sensor test fails.....	31
1.22 Real Time Clock	31
1.22.1 Real time clock test fails	31
1.23 Total call time	31
1.23.1 Total call time fails	31
1.24 Storage.....	32
1.24.1 Memory Card not detected	32
1.24.2 USB Host Mass Storage fails.....	32
1.25 Security.....	33
1.25.1 Security fails	33
1.26 FM Radio.....	34
1.26.1 No/Poor FM Radio reception	34
1.27 Battery Health test	35
1.27.1 Battery Health test fails.....	35
1.28 Verify Certificates.....	35
1.28.1 Verify Certificates fails	35
1.29 TV-Out Test.....	35
1.29.1 TV-Out test fails	35
1.30 Network & Signal.....	36
1.30.1 No/Poor signal	36
1.31 SIM	38
1.31.1 SIM not detected.....	38
1.31.2 Incorrect SIM indicated	38
1.32 Charging	39
1.32.1 Battery will not charge by USB connector	39
1.32.2 Battery will not charge by Magnetic Charging Dock	40
1.33 Audio Jack test.....	42
1.33.1 Connection to portable Handsfree fails.....	42
1.34 Data Communication	43
1.34.1 Data transfer via System Connector fails.....	43
1.35 Water Resistance	44
1.35.1 Water Resistance fails.....	44
2 Revision History	49

Always start with disconnecting the Battery BtB connector to cut off power supply when the Panel Back is disassembled.

Always connect the Battery BtB connector just before the Panel Back is reassembled.

1 Problem Areas

1.1 Power

1.1.1 Will not power on or will switch off randomly

Check:

Check if the phone vibrates by pressing the on/off key.

Action:

1. If activation of the vibrator is detected, refer to section 1.4 'Display'.

2. If NO activation of the Vibrator is detected, check that the battery is charging when connected to a charger.

Follow 1285-2554 Test Instruction - mechanical chapter 2.4.2 (Charging), Diagnostic Battery / Charging status.

Check:

Inspect the on/off key.

Action:

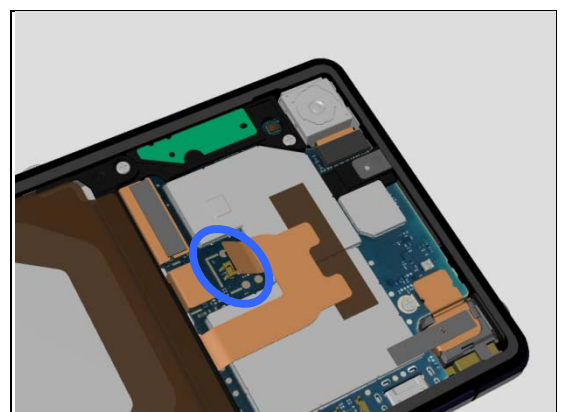
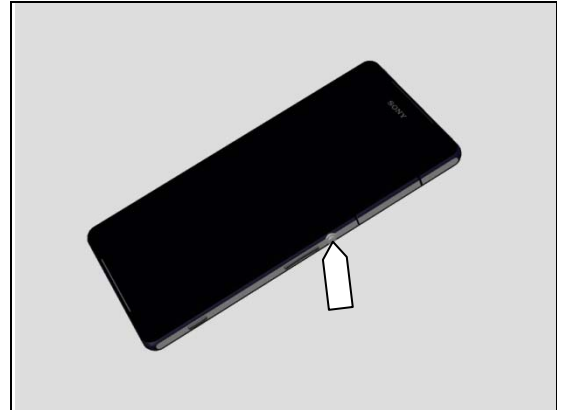
Refer to section 1.2.3 'On/Off Key'.

Check:

Inspect the connection between the Battery and Main PBA.

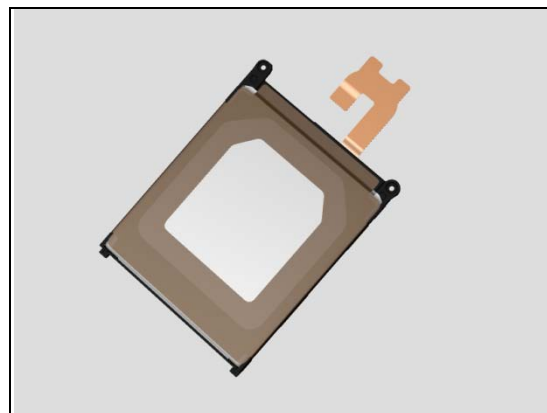
Action:

1. If not properly connected – disconnect and reconnect.
2. If dirty or oxidized – clean the BtB connector.



Problem Areas: Power

3. If the BtB connector, the Battery's FPC or the Battery is damaged – replace the Battery.
4. Replace Main PBA.



Problem Areas

1.2 Keyboard & Switch

1.2.1 Back, Home and Multitask Keys

Action:

Refer to section 1.3 'Touch Screen'.



1.2.2 Volume Key

Check:

Inspect the external area of the Volume Key.

Action:

1. If dirty or clogged – clean it.
2. If the Volume Key is damaged – replace the Display Frame Assy.

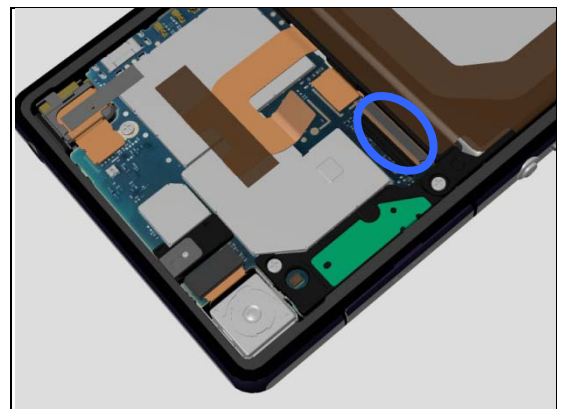


Check:

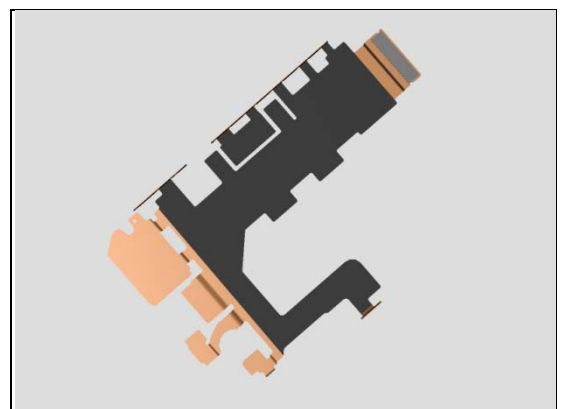
Inspect the connection between the FPC Relay and the Main PBA.

Action:

1. If not properly connected – disconnect and reconnect.
2. If dirty or oxidized – clean the BtB connector.



3. If the FPC Relay is damaged – replace the FPC Relay.
4. Replace Main PBA.



Problem Areas: Keys

1.2.3 On/Off Key

Check:

Inspect the external area of the On/Off Key.

Action:

1. If dirty or clogged – clean it.
2. If the On/Off Key is damaged – replace the Display Frame Assy.

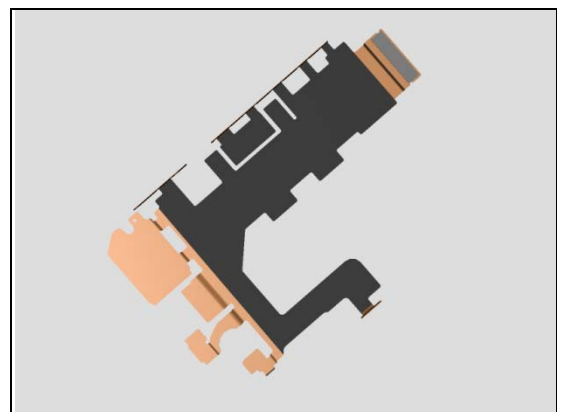
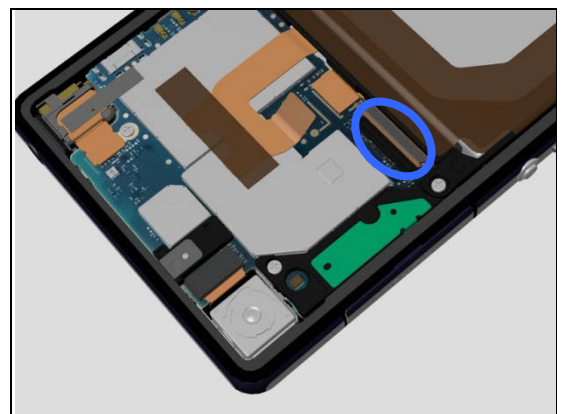
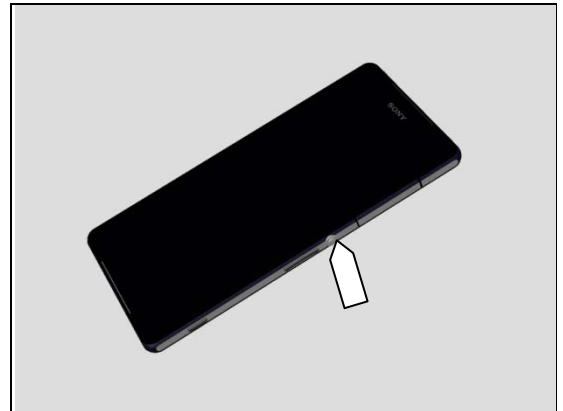
Check:

Inspect the connection between the FPC Relay and the Main PBA.

Action:

1. If not properly connected – disconnect and reconnect.
2. If dirty or oxidized – clean the BtB connector.

3. If the FPC Relay is damaged – replace the FPC Relay.
4. Replace Main PBA.



Problem Areas: Keys

1.2.4 Camera Key

Check:

Inspect the external area of the Camera Key.

Action:

1. If dirty – clean it.
2. If the Camera Key is damaged – replace the Display Frame Assy.

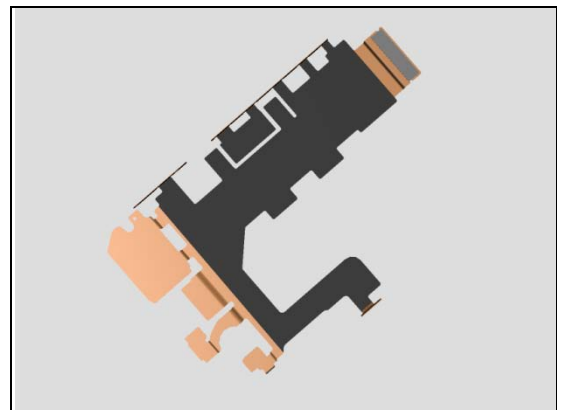
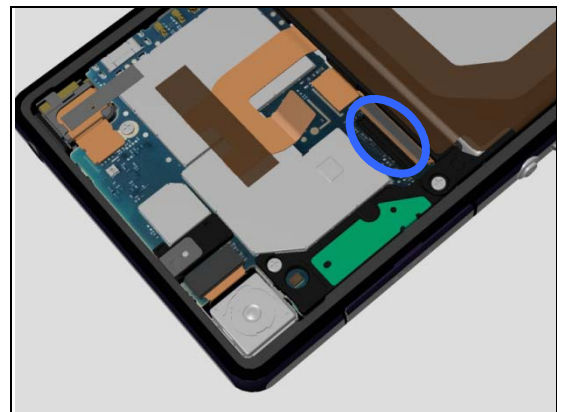
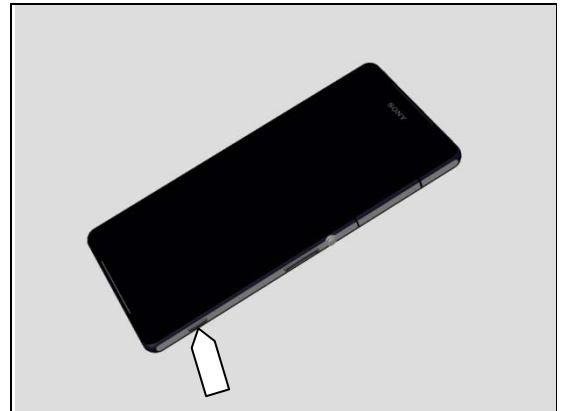
Check:

Inspect the connection between the FPC Relay and the Main PBA.

Action:

1. If not properly connected – disconnect and reconnect.
2. If dirty or oxidized – clean the BtB connector.

3. If the FPC Relay is damaged – replace the FPC Relay.
4. Replace Main PBA.



Problem Areas

1.3 Touch Screen

1.3.1 Touch Screen malfunction

Check:

Inspect the touch screen and try the function of the touch keys in the front.

Action:

If dirty – clean it.

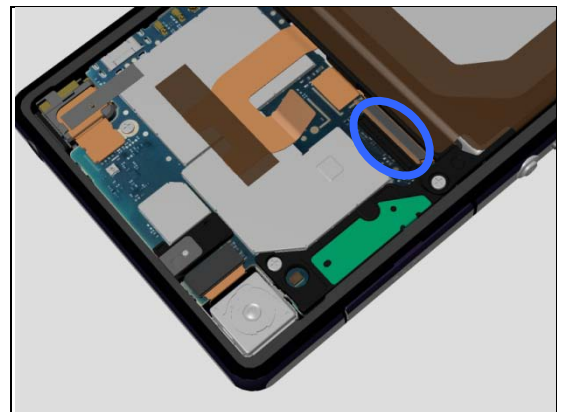


Check:

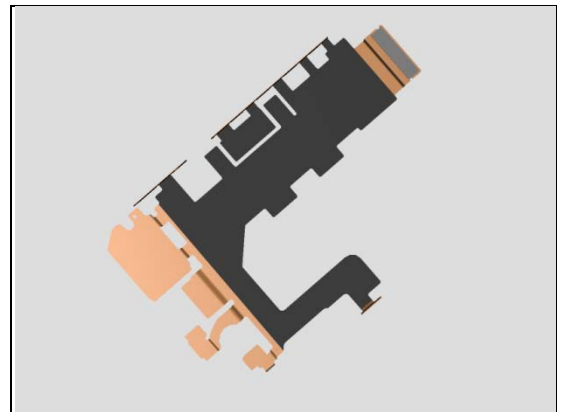
Inspect the connection between the FPC Relay and the Main PBA.

Action:

1. If not properly connected – disconnect and reconnect.
2. If dirty or oxidized – clean the BtB connector.



3. If the FPC Relay is damaged – replace the FPC Relay.

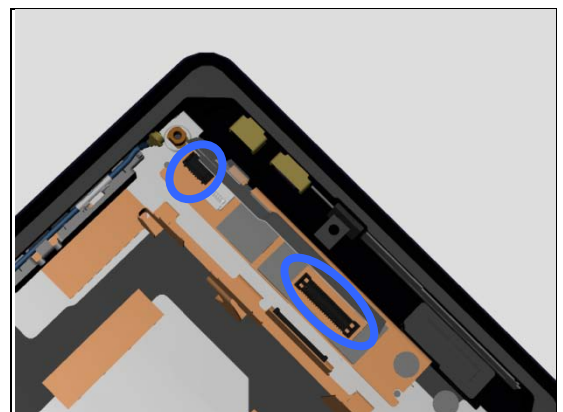


Check:

Inspect the Display Frame Assy, the connections between the FPC Relay and the Display Frame Assy.

Action:

1. If not properly connected – disconnect and reconnect.
2. If dirty or oxidized – clean the connectors.
3. If the Display Frame Assy, the flex film or the connectors is damaged - replace the Display Frame Assy.
4. Replace Main PBA.



Problem Areas

1.4 Display

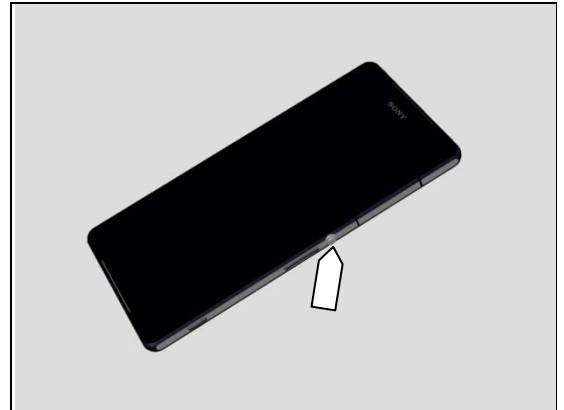
1.4.1 Graphics & Illumination

Check:

Check whether the phone vibrates after the on/off key has been pressed.

Action:

If the activation described above is not detected, refer to section 1.1 'Power'.

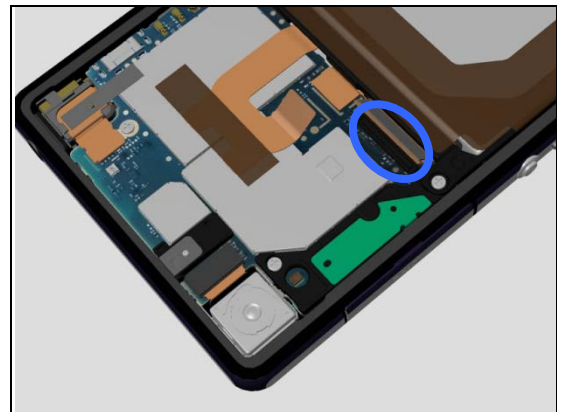


Check:

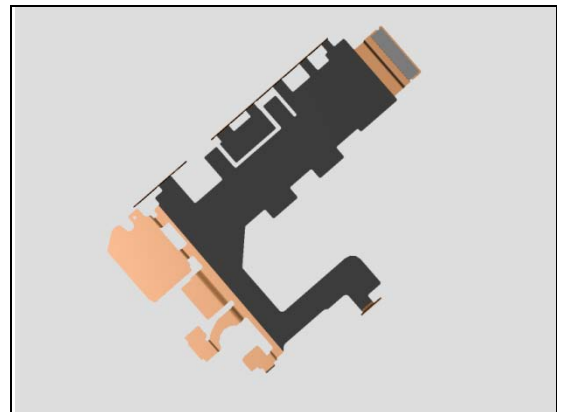
Inspect the connection between the FPC Relay and the Main PBA.

Action:

1. If not properly connected – disconnect and reconnect.
2. If dirty or oxidized – clean the BtB connector.



3. If the FPC Relay is damaged – replace the FPC Relay.

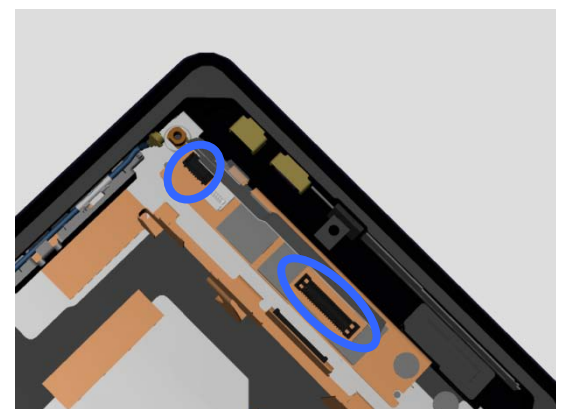


Check:

Inspect the connections between the FPC Relay and the Display Frame Assy.

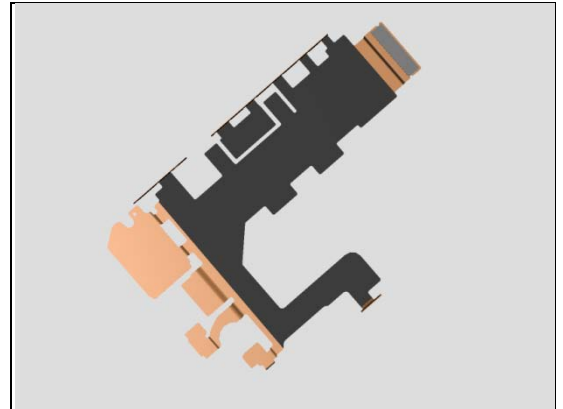
Action:

1. If not properly connected – disconnect and reconnect.
2. If dirty or oxidized – clean connectors.



Problem Areas: Display

3. If the FPC Relay is damaged – replace the FPC Relay.



Check:

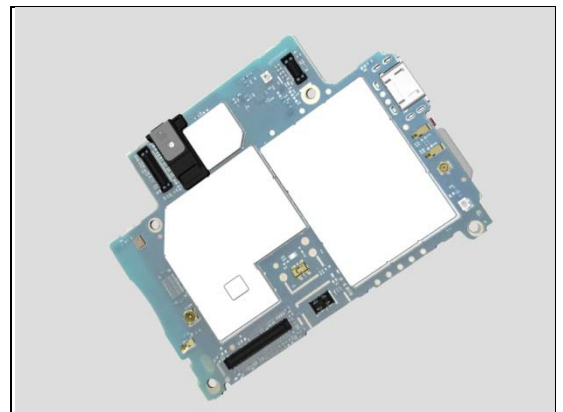
Replace the Main PBA with a known working one and test the Display Frame Assy.

Action:

1. If the Display Frame Assy is still not working – replace it.
2. If the Display Frame Assy, the flex film or the connectors is damaged - replace the Display Frame Assy.



3. Replace Main PBA.



Problem Areas

1.5 LED/Illumination

1.5.1 LED/Illumination

Check:

Inspect external port of Notification LED on the Display Frame Assy.

Action:

If dirty – clean it.

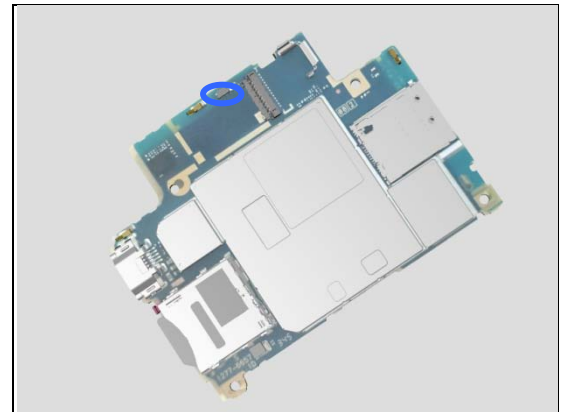


Check:

Inspect the Notification LED on the Main PBA.

Action:

1. If dirty – clean it.
2. Replace Main PBA.



Problem Areas

1.6 Speaker / Stereo Speaker

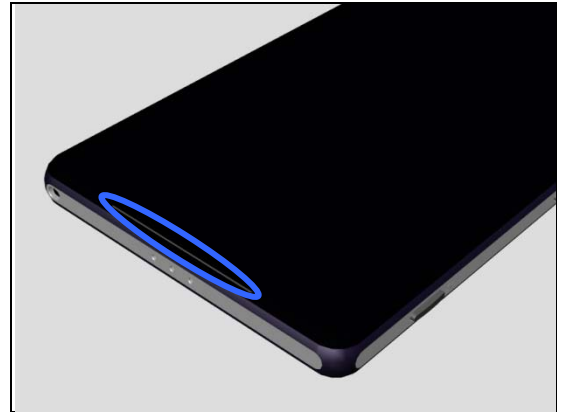
1.6.1 Bottom Speaker

Check:

Inspect the external port of the Bottom Speaker.

Action:

1. If the external port is clogged – clean it.

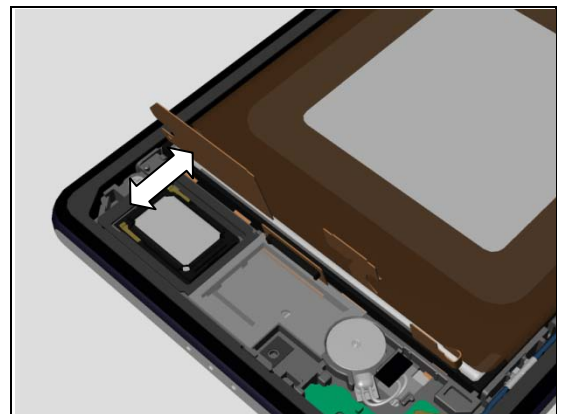


Check:

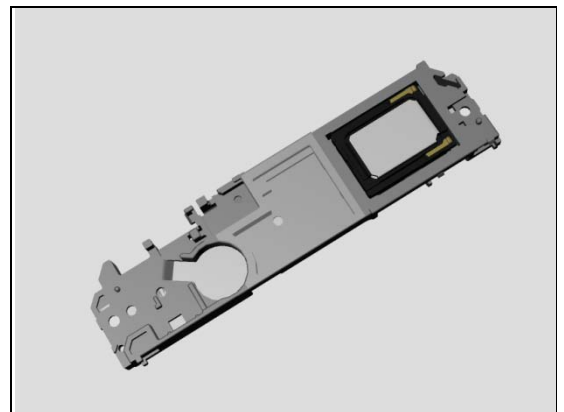
Inspect the contact pins of Loudspeaker and the contact pads on the FPC Relay.

Action:

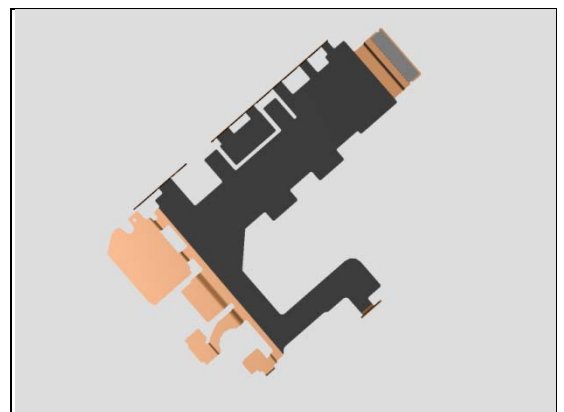
1. If dirty – clean them.



2. If the contact pins of Loudspeaker or the Loudspeaker are damaged – replace the Holder Loudspeaker.



3. If the contact pads of FPC Relay are damaged - replace the FPC Relay.



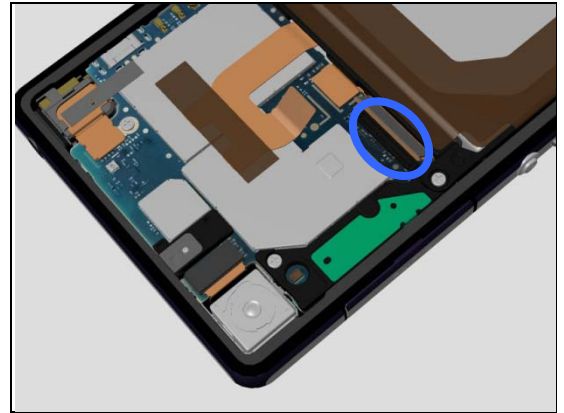
Problem Areas: Stereo Speaker

Check:

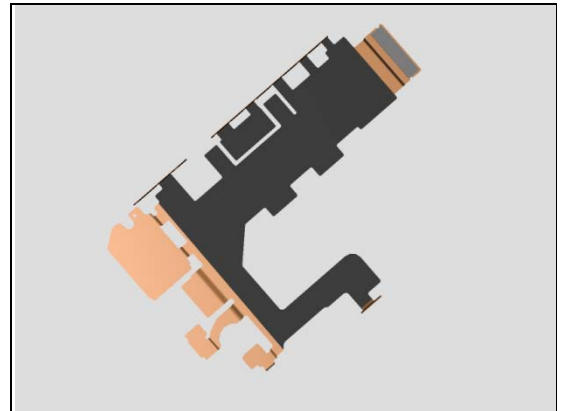
Inspect the connection between the FPC Relay and the Main PBA.

Action:

1. If not properly connected – disconnect and reconnect.
2. If dirty or oxidized – clean the BtB connector.



3. If the FPC Relay is damaged – replace the FPC Relay.
4. Replace Main PBA.



1.6.2 Top Speaker

Action:

Refer to section 1.7 'Earphone'.

Problem Areas

1.7 Earphone

1.7.1 Ear Speaker

(For Echo, see Microphone)

Check:

Inspect the external port of Top Speaker on the Display Frame Assy.

Action:

1. If clogged – clean it.

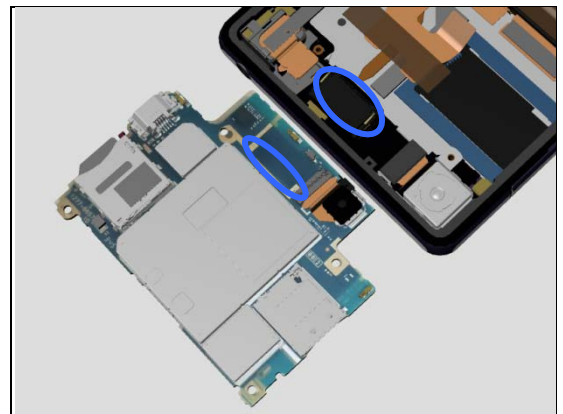


Check:

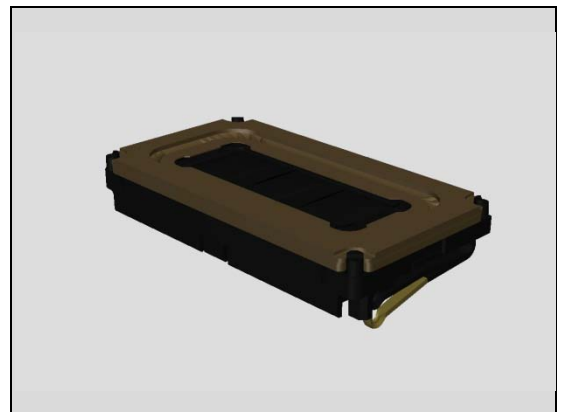
Inspect the contact pins of Top Speaker and the contact pads on the Main PBA.

Action:

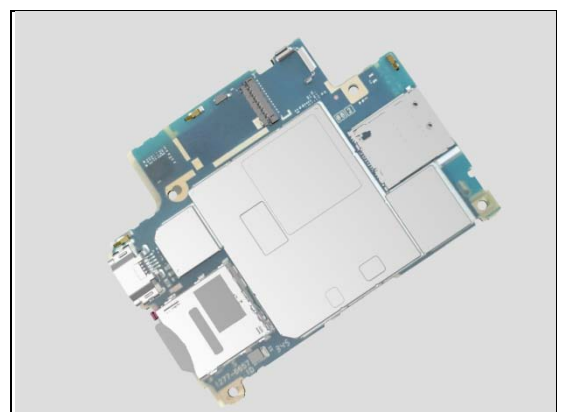
1. If dirty – clean them.



2. If the contact pins of the Top Speaker or the Top Speaker are damaged – replace the Top Speaker.



3. Replace Main PBA.



Problem Areas

1.8 Microphone

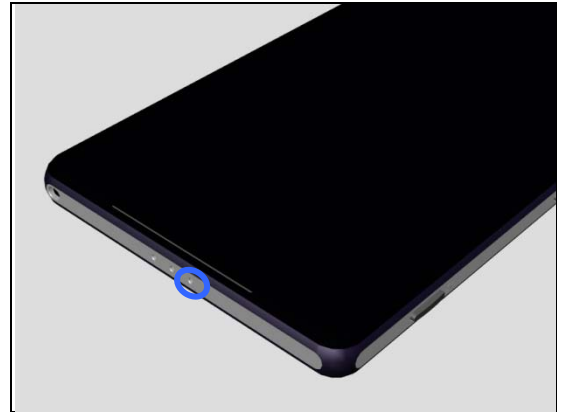
1.8.1 Primary Microphone

Check:

Inspect the external port of the microphone.

Action:

1. If the external port is clogged – clean it.

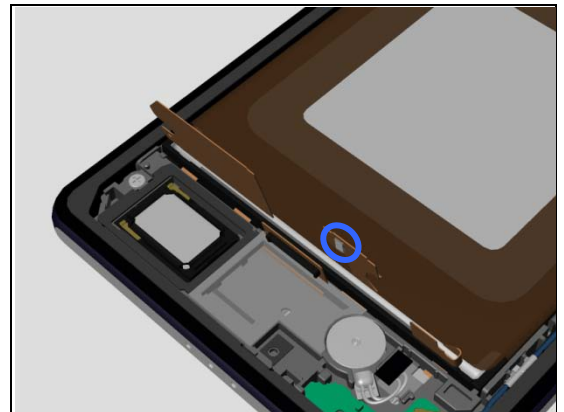


Check:

Inspect the microphone on the FPC Relay.

Action:

1. If clogged – clean it.
2. If the microphone is damaged – replace the FPC Relay.

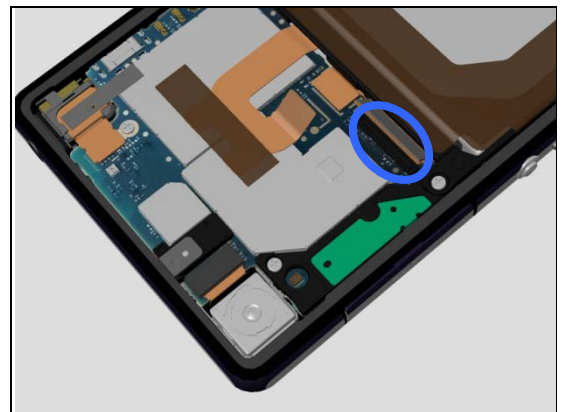


Check:

Inspect the connection between the FPC Relay and the Main PBA.

Action:

1. If not properly connected – disconnect and reconnect.
2. If dirty or oxidized – clean the BtB connector.



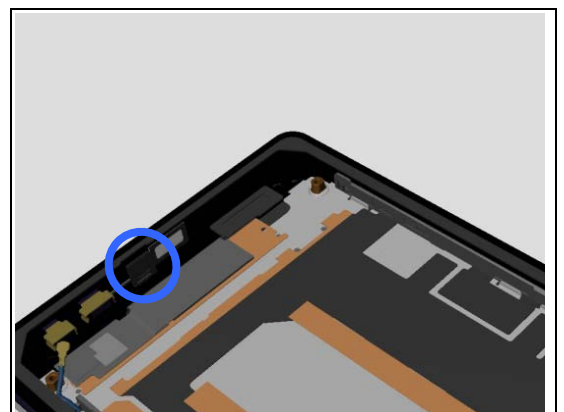
For typically Echo or poor/weak microphone sound.

Check:

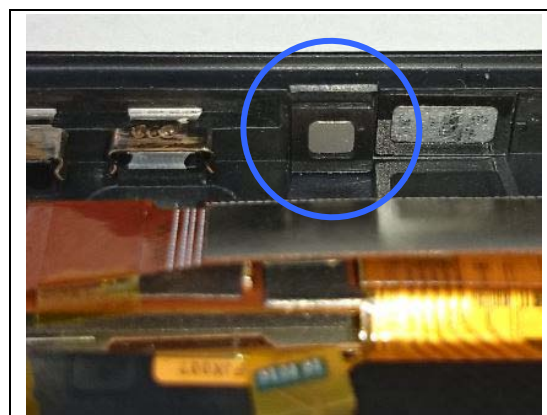
Inspect the Sheet 1st MIC in Display Frame.

Action:

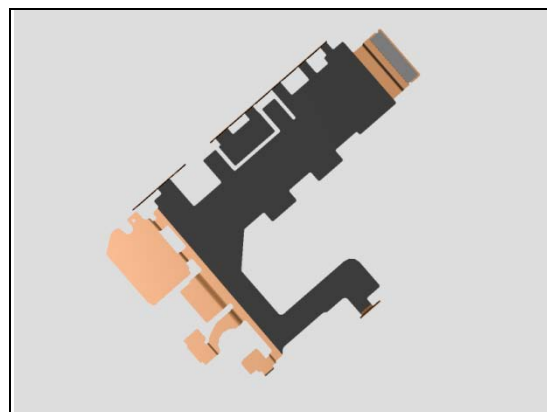
1. If not properly placed (aligned along bottom and right edge, see working instruction) replace it.
2. If there is Echo problem, replace it



Problem Areas: Microphone



3. If the FPC Relay is damaged – replace the FPC Relay.
4. Replace Main PBA.



Problem Areas: Microphone

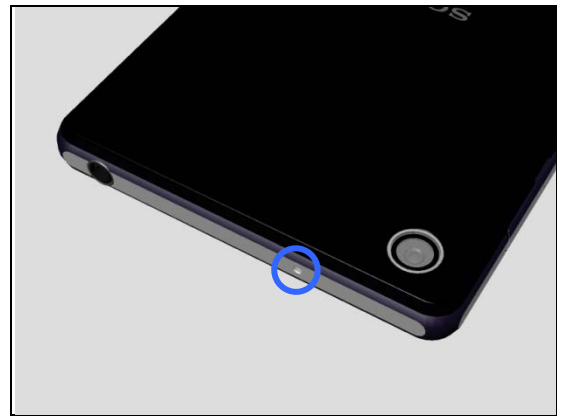
1.8.2 Secondary Microphone

Check:

Inspect the external port of secondary microphone on the Display Frame Assy.

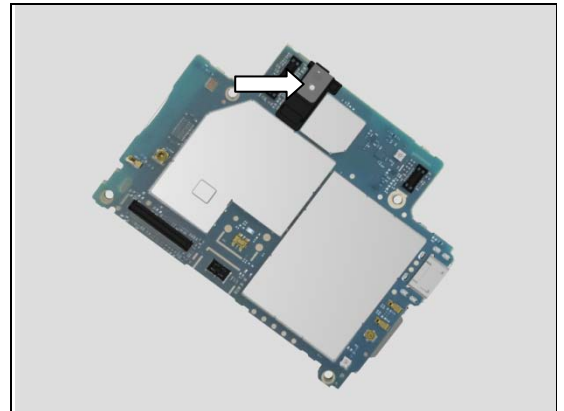
Action:

1. If clogged – clean it.



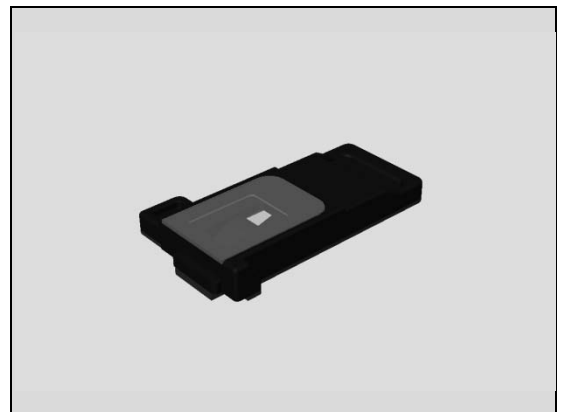
Check:

Inspect the Holder 2nd Mic on the Main PBA.



Action:

1. If dirty or clogged – clean it.
2. If the Holder 2nd Mic is damaged – replace it.

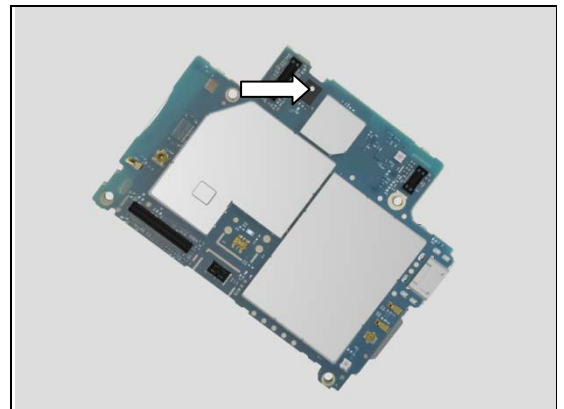


Check:

Inspect the Microphone on the Main PBA.

Action:

1. If dirty or clogged – clean it.
2. If damaged – replace the Main PBA.



Problem Areas

1.9 Vibrator

1.9.1 Vibrator not generating alerts

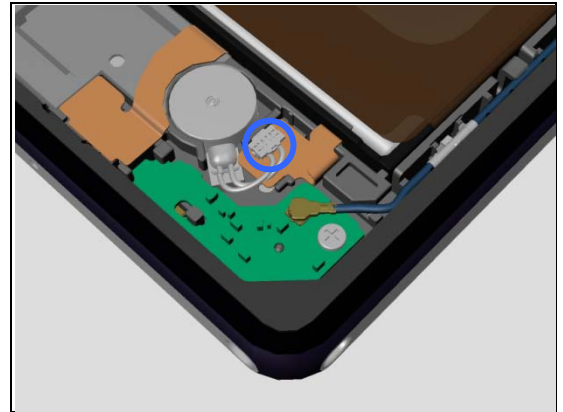
Check:

Inspect the connection between the Vibrator and the FPC Relay.

Action:

1. If not properly connected – disconnect and reconnect.
2. If dirty or oxidized – clean connector.

3. If the vibrator is damaged – replace the Vibrator.



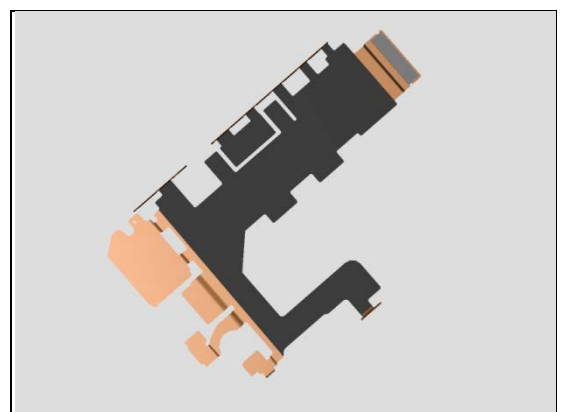
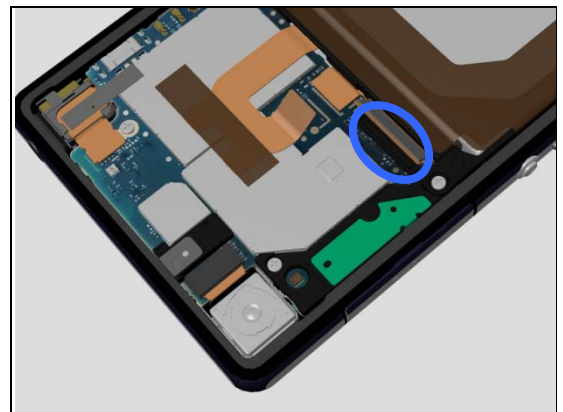
Check:

Inspect the connection between the FPC Relay and the Main PBA.

Action:

1. If not properly connected – disconnect and reconnect.
2. If dirty or oxidized – clean the BtB connector.

3. If the FPC Relay is damaged – replace the FPC Relay.
4. Replace Main PBA.



Problem Areas

1.10 Camera

1.10.1 Main Camera

Check:

Inspect the external area of camera window.

Action:

1. If dirty – clean it.
2. If scratched or damaged – replace the Panel Back.

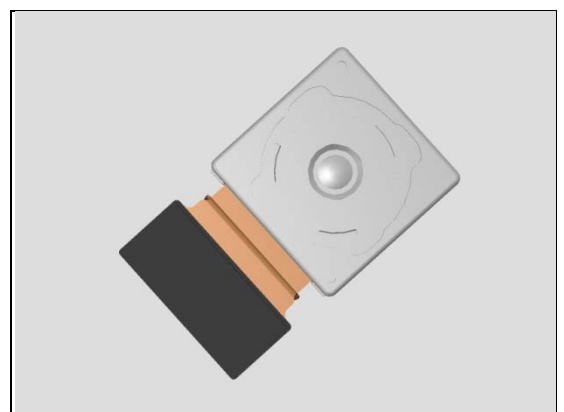
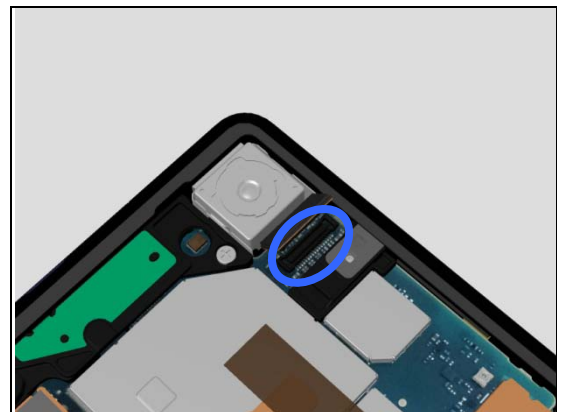
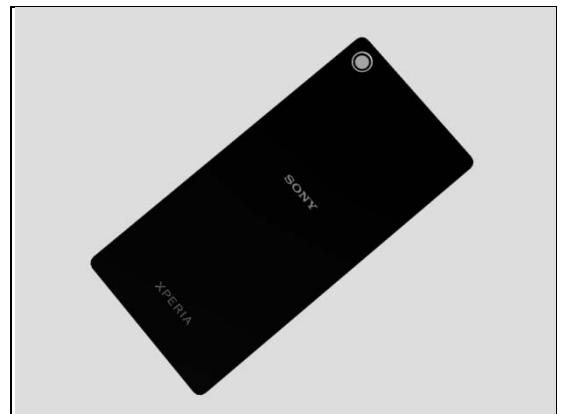
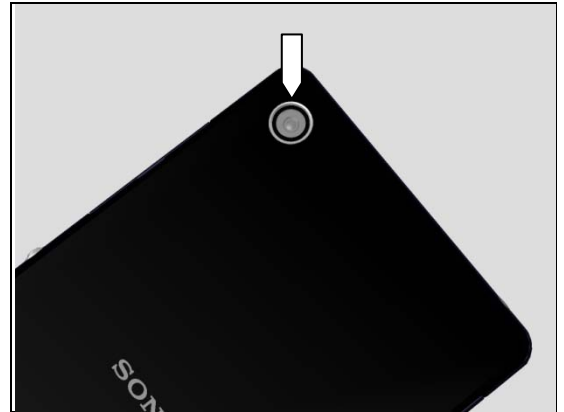
Check:

Inspect the connection between the Main Camera and the Main PBA.

Action:

1. If not properly connected – disconnect and reconnect.
2. If dirty or oxidized – clean the BtB connector.

3. If the BtB connector or the Main Camera is damaged – replace the Main Camera.
4. Replace Main PBA.



Problem Areas: Camera

1.10.2 Secondary Camera defects

Check:

Inspect the external area of the video camera window.



Action:

1. If dirty – clean it.
2. If scratched or damaged – replace the Display Frame Assy.

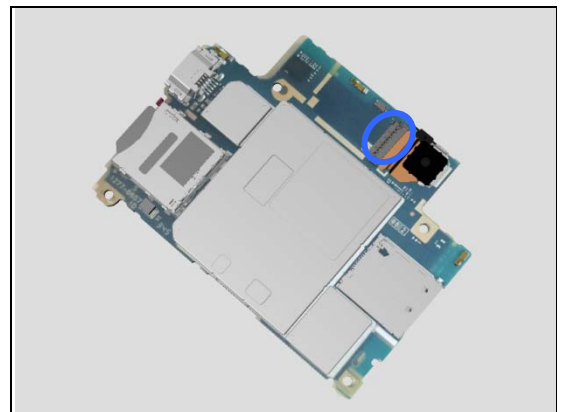


Check:

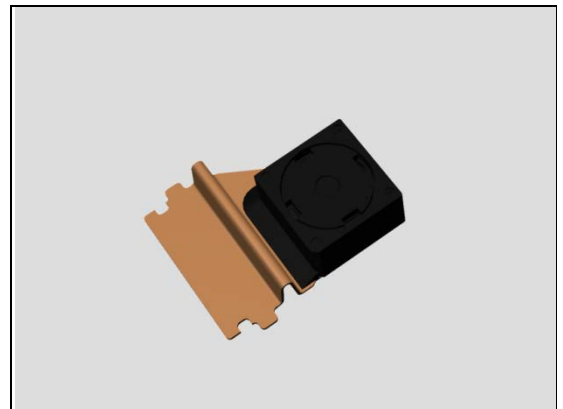
Inspect the connection between the Camera Chat and the Main PBA.

Action:

1. If not properly connected – disconnect and reconnect.
2. If dirty or oxidized – clean connector.



3. If the ZIF connector or the Camera Chat is damaged – replace the Camera Chat.
4. Replace Main PBA.



Problem Areas

1.11 Flash LED

1.11.1 Flash LED not flashing

Check:

Inspect the external area of the flash LED window.

Action:

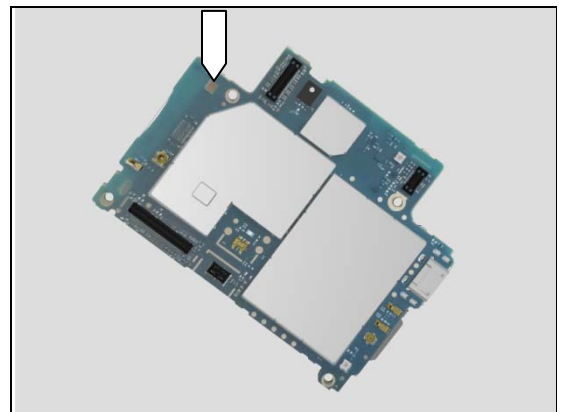
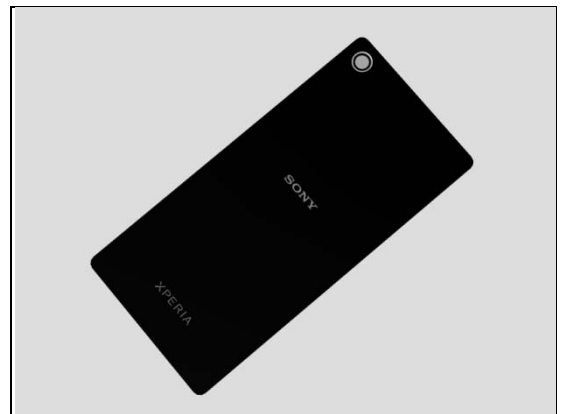
1. If dirty – clean it.
2. If scratched or damaged – replace the Panel Back.

Check:

Inspect the flash LED on the Main PBA.

Action:

1. If dirty – clean it.
2. Replace Main PBA.



Problem Areas

1.12 Antenna Switching

1.12.1 Antenna Switching fails

This test is not applicable for this product.

Problem Areas

1.13 Bluetooth and WLAN

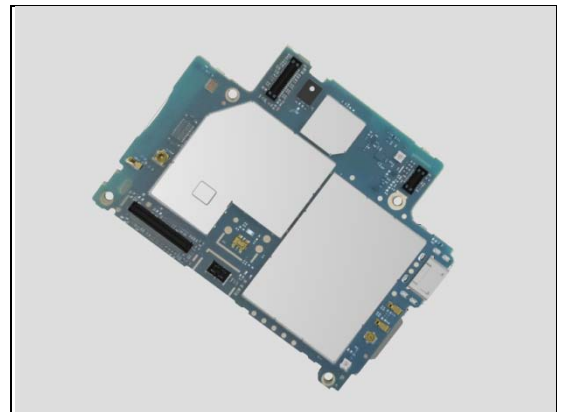
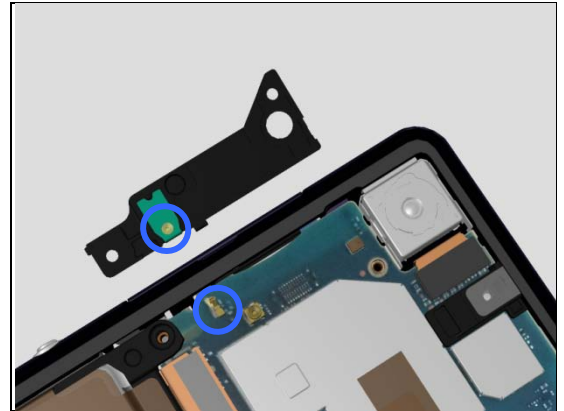
1.13.1 Bluetooth or WLAN connection failure

Check:

Inspect the contact pad on Antenna WLAN and the contact pin on Main PBA.

Action:

1. If dirty or oxidized – clean the pad and pin.
2. If the antenna is damaged – replace the Antenna WLAN.
3. If the contact pins on Main PBA is damaged – replace the Main PBA.



Problem Areas

1.14 NFC

1.14.1 NFC malfunctions

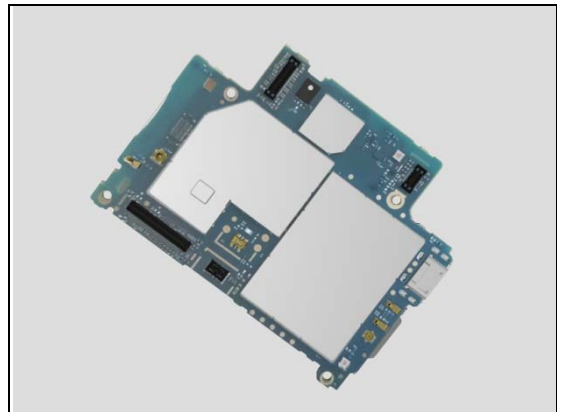
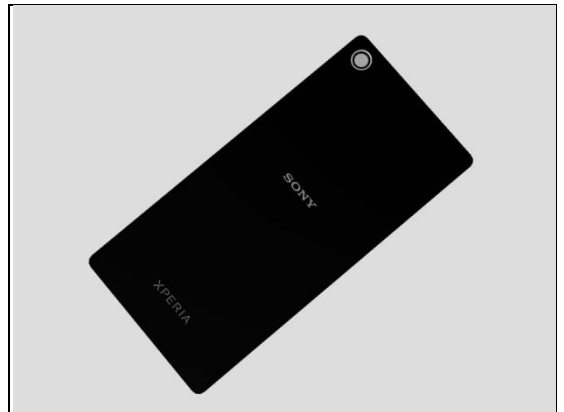
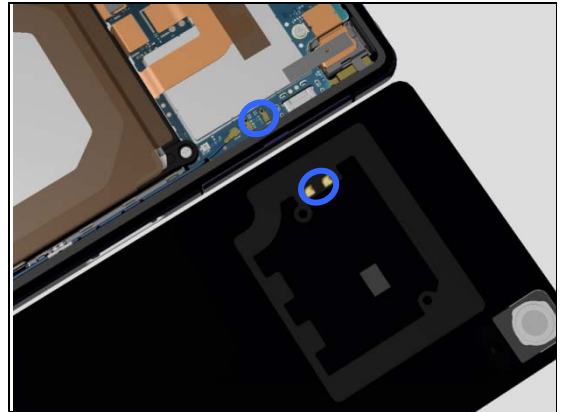
Check:

Inspect the NFC antenna contact pads on Panel Back and the contact pins on Main PBA.

Action:

1. If dirty or oxidized – clean the pads and pins.
2. If the NFC antenna contact pads are damaged – replace the Panel Back.

3. Replace the Main PBA.



Problem Areas

1.15 GPS

1.15.1 GPS malfunctions

Check:

Inspect the antenna on FPC Audio Jack and the contact pin on Main PBA.

Action:

1. If dirty or oxidized – clean the pad and pin.
2. If the FPC Audio Jack is damaged – replace it.

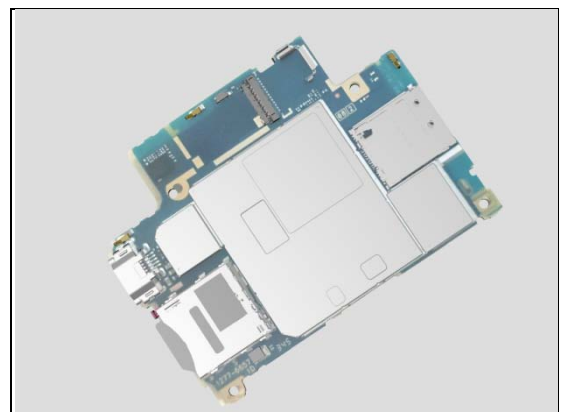
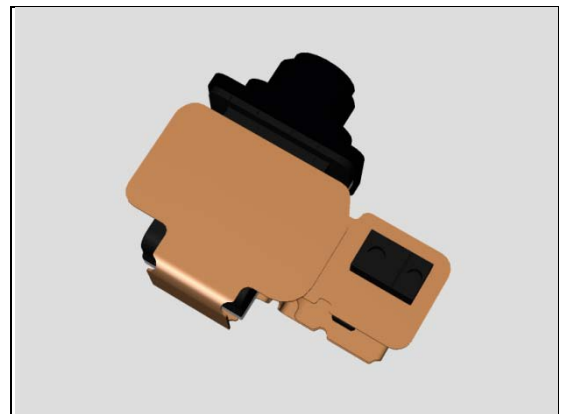
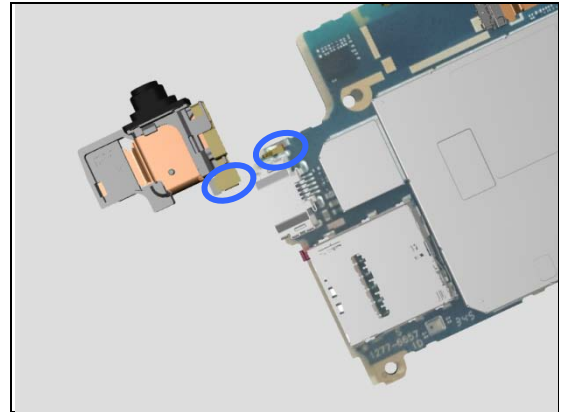
Check:

Replace the Main PBA with a known working one and test the GPS.

Action:

1. If the GPS is still not working – replace the Display Frame Assy.

2. Replace the Main PBA.



Problem Areas

1.16 Compass

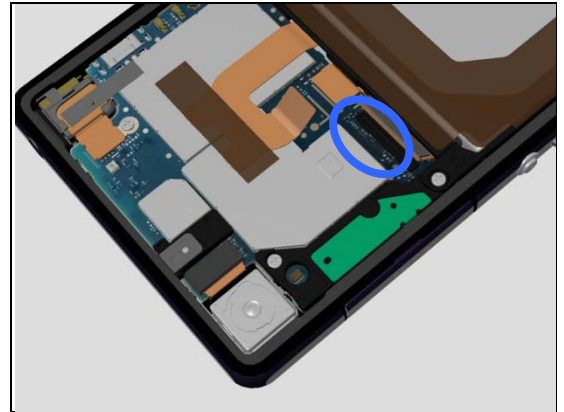
1.16.1 Compass fails

Check:

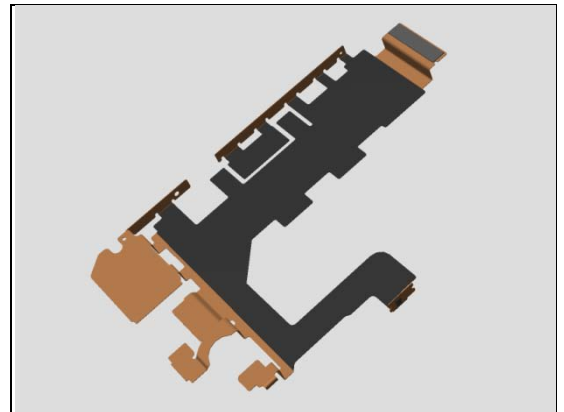
Inspect the connection between the FPC Relay and the Main PBA.

Action:

1. If not properly connected – disconnect and reconnect.
2. If dirty or oxidized – clean the BtB connector.



3. If the BtB connector or FPC is damaged – replace FPC Relay.

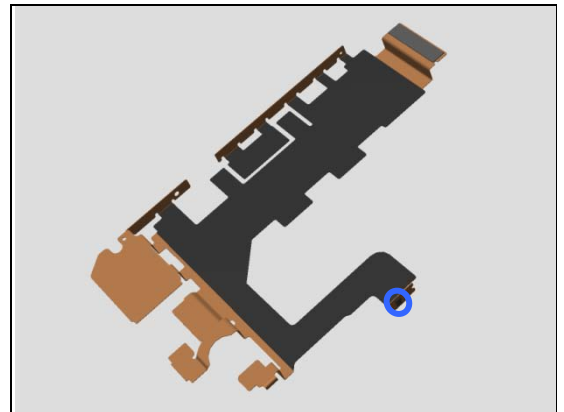


Check:

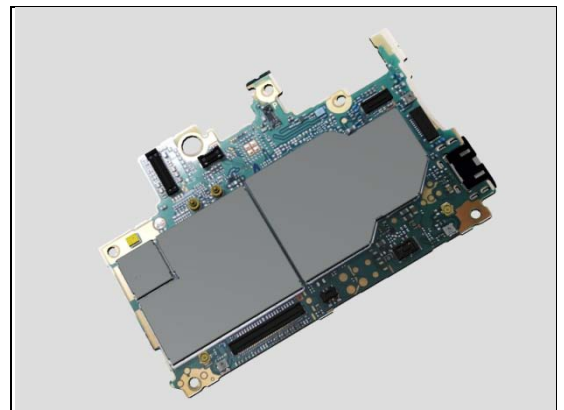
Inspect the compass chip on the FPC Relay.

Action:

1. If the compass chip is damaged – replace the FPC Relay.



2. Replace Main PBA.



Problem Areas

1.17 Accelerometer

1.17.1 Accelerometer test fails

Action:

1. Follow the calibrations in Trouble Shooting Application
1262-6643 – mechanical
2. Replace Main PBA.

Problem Areas

1.18 Gyroscope

1.18.1 Gyroscope test fails

Action:

1. Follow the calibrations in Trouble Shooting Application
1262-6643 – mechanical
2. Replace Main PBA.

Problem Areas

1.19 Ambient Light Sensor

1.19.1 Light Sensor malfunctions

Check:

Inspect the external window area of Light Sensor on the Display Frame Assy.



Action:

1. If dirty – clean it.
2. If scratched or damaged – replace the Display Frame Assy.

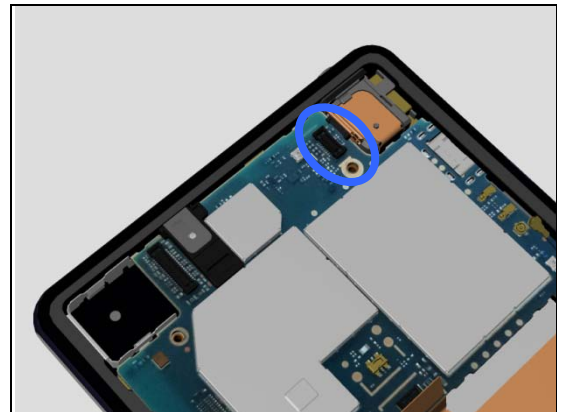


Check:

Inspect the connection between the FPC Audio Jack and the Main PBA.

Action:

1. If not properly connected – disconnect and reconnect.
2. If dirty or oxidized – clean BtB connector.

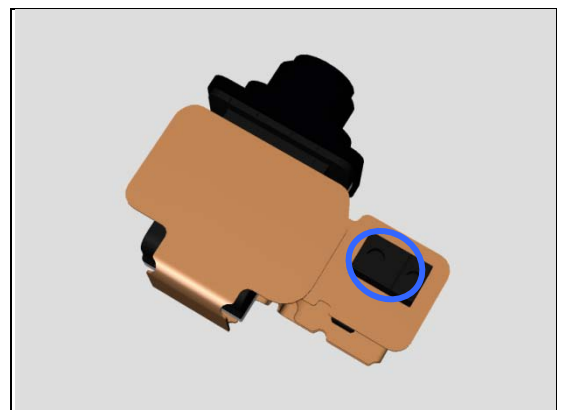


Check:

Inspect the sensor on the FPC Audio Jack.

Action:

1. If dirty or clogged – clean it.
2. If damaged – replace the FPC Audio Jack.
3. Replace Main PBA.



Problem Areas

1.20 Proximity Switch

1.20.1 Proximity Switch malfunctions

Check:

Inspect the external window area of Proximity Switch on the Display Frame Assy.



Action:

1. If dirty – clean it.
2. If scratched or damaged – replace the Display Frame Assy.

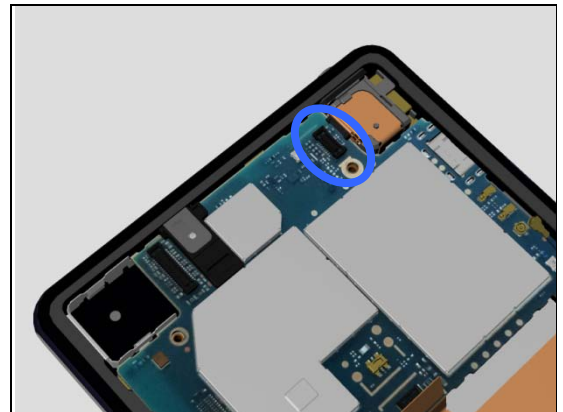


Check:

Inspect the connection between the FPC Audio Jack and the Main PBA.

Action:

1. If not properly connected – disconnect and reconnect.
2. If dirty or oxidized – clean BtB connector.

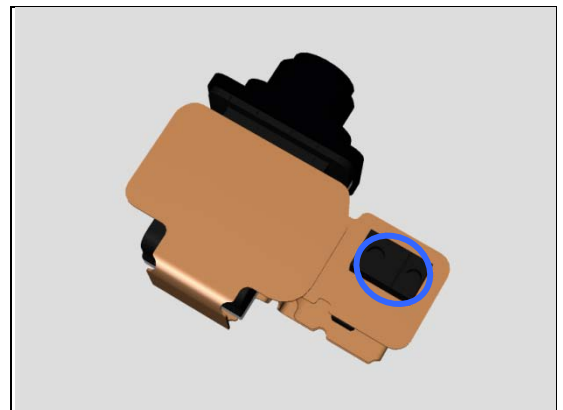


Check:

Inspect the sensor on the FPC Audio Jack.

Action:

1. If dirty or clogged – clean it.
2. If damaged – replace the FPC Audio Jack.
3. Replace Main PBA.



Problem Areas

1.21 Pressure Sensor

1.21.1 Pressure Sensor test fails

Action:

Replace Main PBA.

Problem Areas

1.22 Real Time Clock

1.22.1 Real time clock test fails

Action:

Replace Main PBA.

Problem Areas

1.23 Total call time

1.23.1 Total call time fails

Action:

Replace Main PBA.

Problem Areas

1.24 Storage

1.24.1 Memory Card not detected

Check:

Check that the memory card is properly inserted.

Action:

If not – insert the memory card correctly.

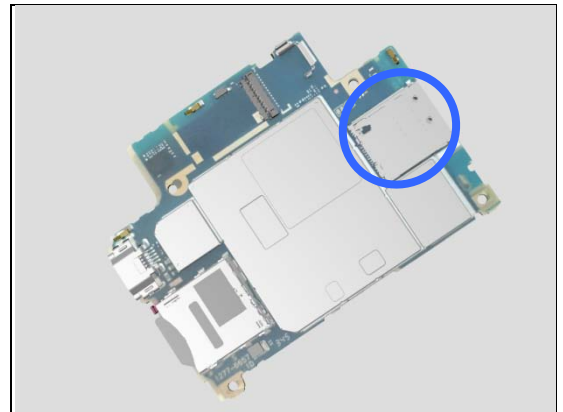


Check:

Inspect the memory card holder on Main PBA.

Action:

1. If dirty or clogged – clean the holder.
2. Replace Main PBA.



1.24.2 USB Host Mass Storage fails

Action:

Refer to section 1.34 'Data Communication'

Problem Areas

1.25 Security

1.25.1 Security fails

Action:

Replace Main PBA.

Problem Areas

1.26 FM Radio

1.26.1 No/Poor FM Radio reception

Check:

Inspect the external port of the Audio Jack.

Action:

If clogged – clean the connector.

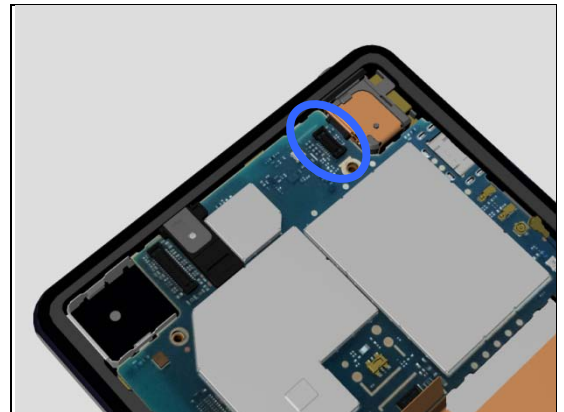


Check:

Inspect the connection between the FPC Audio Jack and the Main PBA.

Action:

1. If not properly connected – disconnect and reconnect.
2. If dirty or oxidized – clean BtB connector.

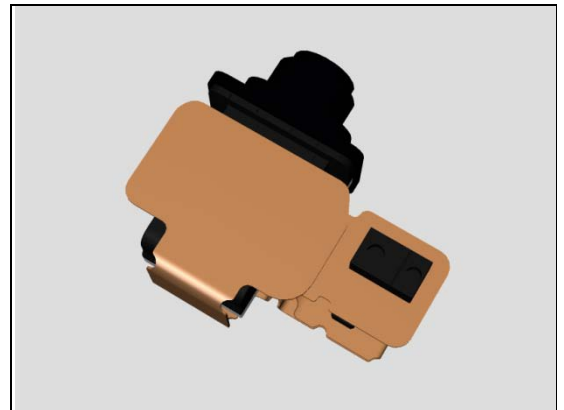


Check:

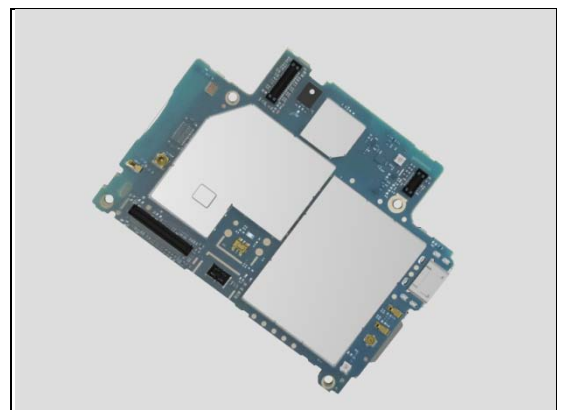
Inspect the FPC Audio Jack.

Action:

1. If the FPC Audio Jack is damaged – replace it.



2. Replace Main PBA.



Problem Areas

1.27 Battery Health test

1.27.1 Battery Health test fails

This test is not applicable for this product.

Problem Areas

1.28 Verify Certificates

1.28.1 Verify Certificates fails

This test is not applicable for this product.

Problem Areas

1.29 TV-Out Test

1.29.1 TV-Out test fails

Check:

Inspect the USB connector.

Action:

1. If dirty, clogged or oxidized – clean the connector.
2. Replace Main PBA.



Problem Areas

1.30 Network & Signal

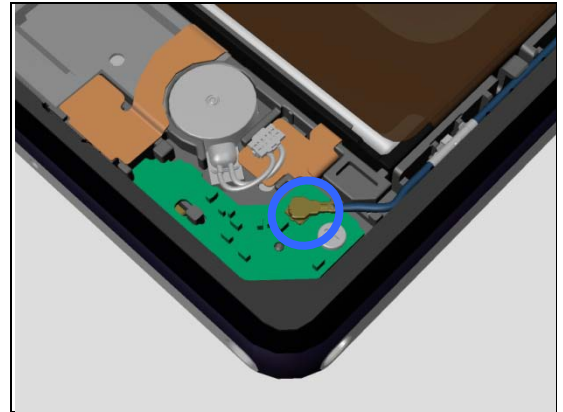
1.30.1 No/Poor signal

Check:

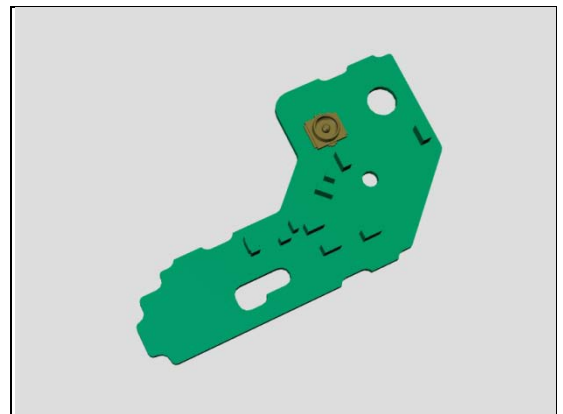
Inspect the connection between the Cable RF Coax and the PBA Antenna.

Action:

1. If not properly connected – disconnect and reconnect.
2. If dirty or oxidized – clean the connector.



3. If the RF connector of PBA Antenna is damaged – replace the PBA Antenna.

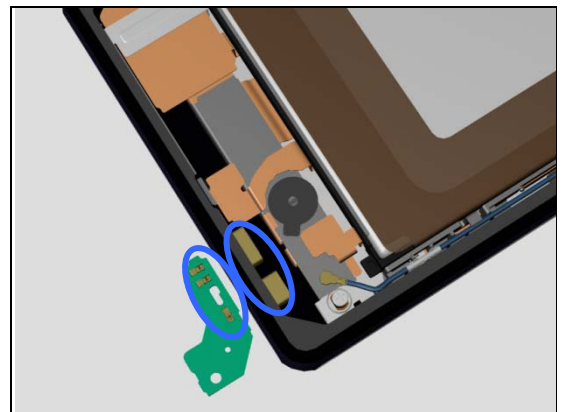


Check:

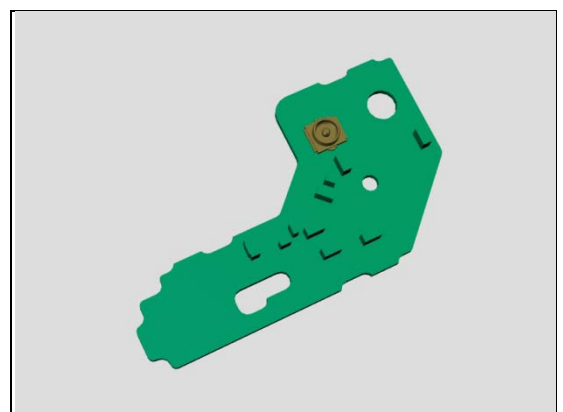
Inspect the antenna pads on Display Frame Assy and the contact pins on PBA Antenna.

Action:

1. If dirty or oxidized – clean the antenna pads and the pins.



2. If the contact pins are damaged – replace the PBA Antenna.



Problem Areas: Network & Signal

Check:

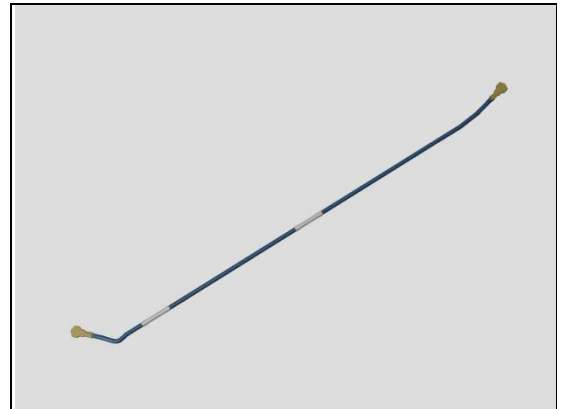
Inspect the connection between the Cable RF Coax to the Main PBA.

Action:

1. If not properly connected – disconnect and reconnect.
2. If dirty or oxidized – clean the connector.



3. If the Cable RF Coax is damaged – replace the Cable RF Coax.



Check:

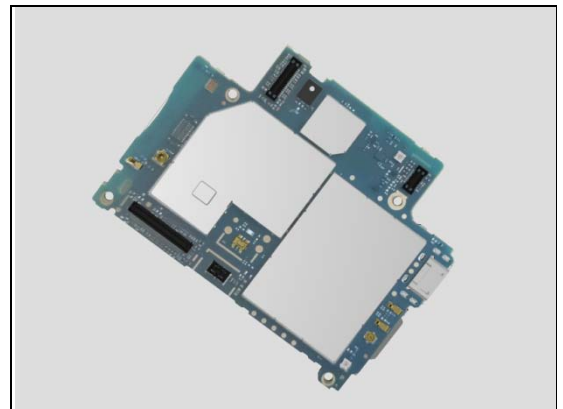
Replace the Main PBA with a known working one and test the network.

Action:

1. If the network is still not working – replace the Display Frame Assy.



2. Replace Main PBA.



Problem Areas

1.31 SIM

1.31.1 SIM not detected

Check:

Inspect the external port of the SIM card holder and check if a SIM card can be properly inserted.

Action:

If clogged – clean the external port.

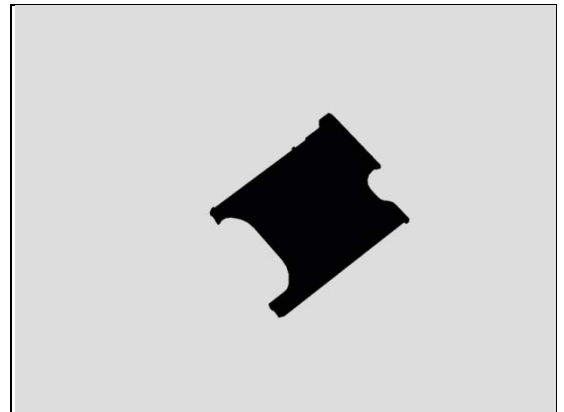


Check:

Inspect the SIM Tray.

Action:

If the SIM Tray is damaged or missing – replace it.

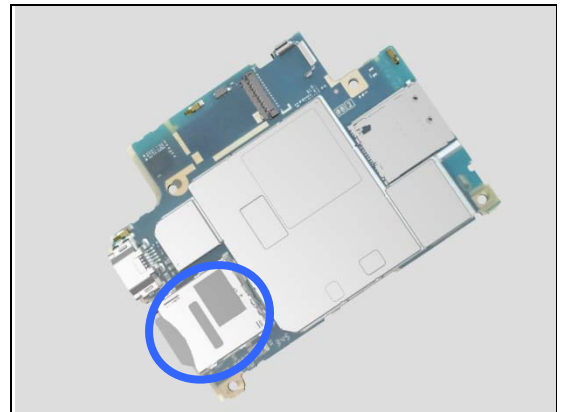


Check:

Inspect the SIM card holder on Main PBA.

Action:

1. If dirty or clogged – clean the holder.
2. Replace Main PBA.



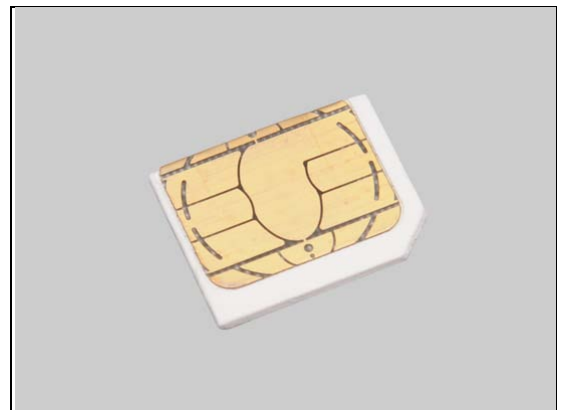
1.31.2 Incorrect SIM indicated

Check:

Check whether the phone is locked to a particular operator and whether the correct operator SIM is being used.

Action:

1. Use a proper operator SIM or test SIM.
2. Customize in Emma to the correct SI according label.
3. Replace Main PBA.



Problem Areas

1.32 Charging

1.32.1 Battery will not charge by USB connector

Check:

Inspect the USB connector.

Action:

If dirty, clogged or oxidized – clean the connector.

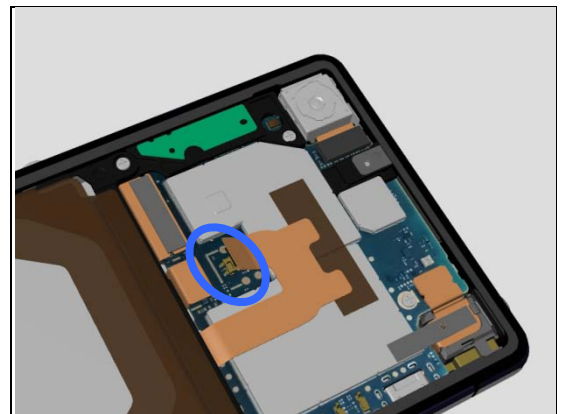


Check:

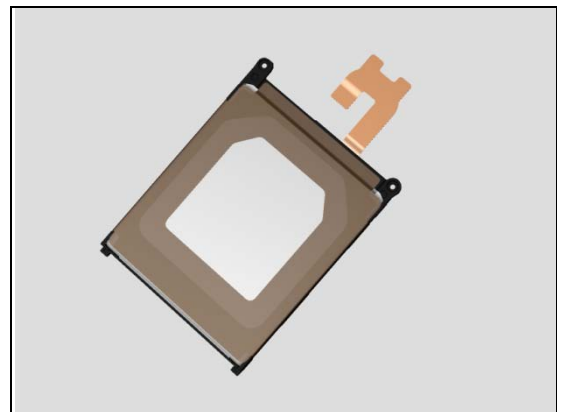
Inspect the connection between the Battery and the Main PBA.

Action:

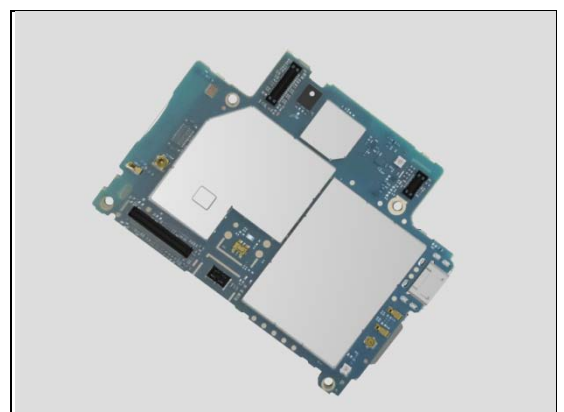
1. If not properly connected – disconnect and reconnect.
2. If dirty or oxidized – clean the BtB connector.



3. If the Battery or its flex is damaged – replace the Battery.



4. Replace Main PBA.



Problem Areas: Charging

1.32.2 Battery will not charge by Magnetic Charging Dock

Check:

Inspect the external port of the Magnetic Charger Connector on the Display Frame Assy.

Action:

If dirty or oxidized – clean it.

If damaged or loose – Replace Display Frame Assy.

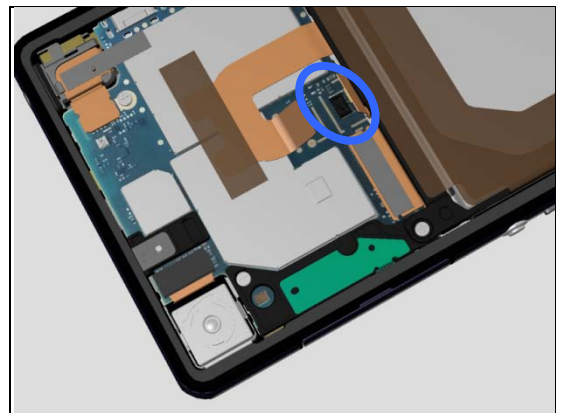


Check:

Inspect the connection between the FPC CG and the Main PBA.

Action:

1. If not properly connected – disconnect and reconnect.
2. If dirty or oxidized – clean the BtB connector.

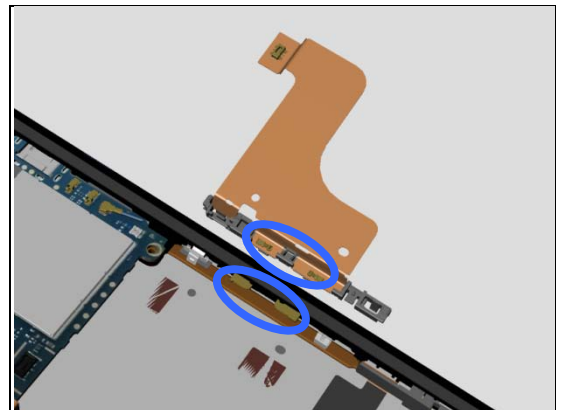


Check:

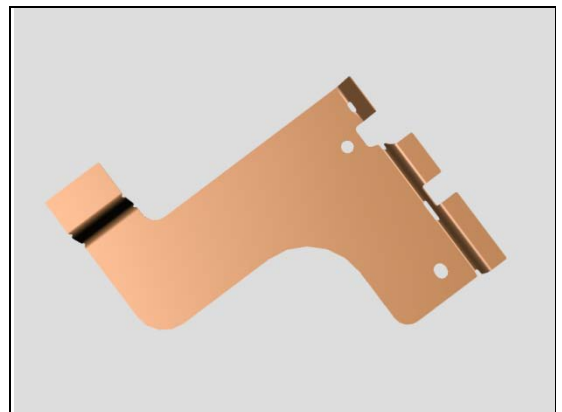
Inspect the contact pins on FPC CG and pads on Magnetic Charger Connector on the Display Frame Assy.

Action:

1. If dirty or oxidized – clean the pins and pads.



2. If the FPC CG or its connectors is damaged – replace the FPC CG.



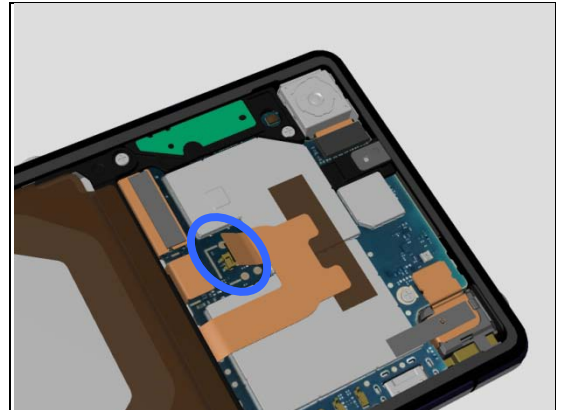
Problem Areas: Charging

Check:

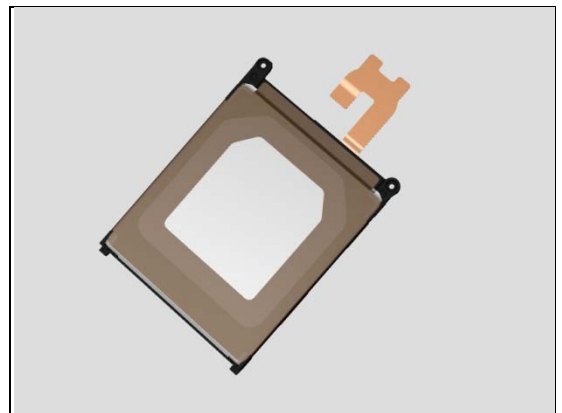
Inspect the connection between the Battery and the Main PBA.

Action:

1. If not properly connected – disconnect and reconnect.
2. If dirty or oxidized – clean the BtB connector.



3. If the Battery or its flex is damaged – replace the Battery.



Check:

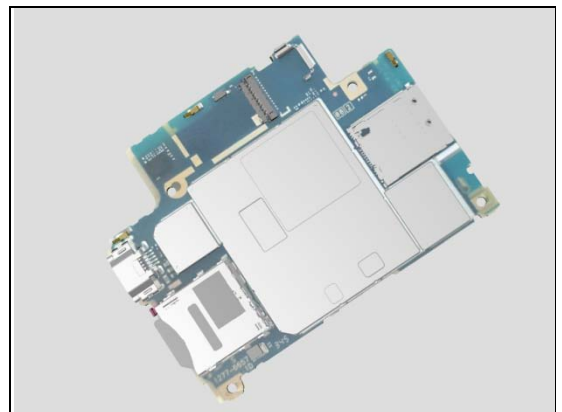
Replace the Main PBA with a known working one and test the charging.

Action:

1. If the charging is still not working – replace the Display Frame Assy.



2. Replace Main PBA.



Problem Areas

1.33 Audio Jack test

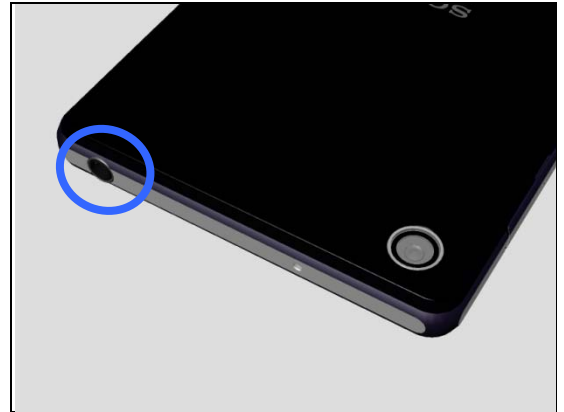
1.33.1 Connection to portable Handsfree fails

Check:

Inspect the external port of the Audio Jack.

Action:

1. If clogged – clean the connector.

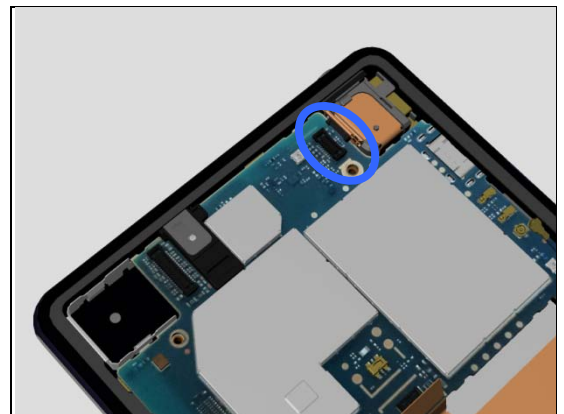


Check:

Inspect the connection between the FPC Audio Jack and the Main PBA.

Action:

1. If not properly connected – disconnect and reconnect.
2. If dirty or oxidized – clean BtB connector.

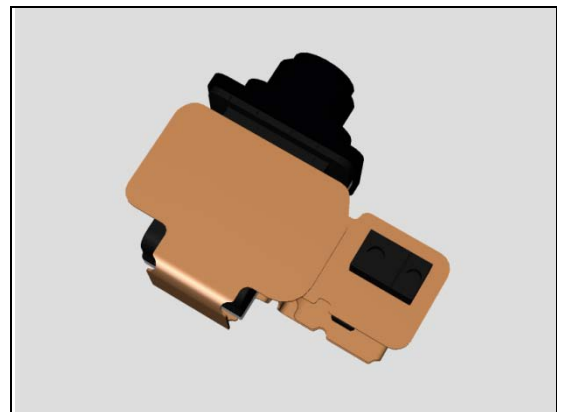


Check:

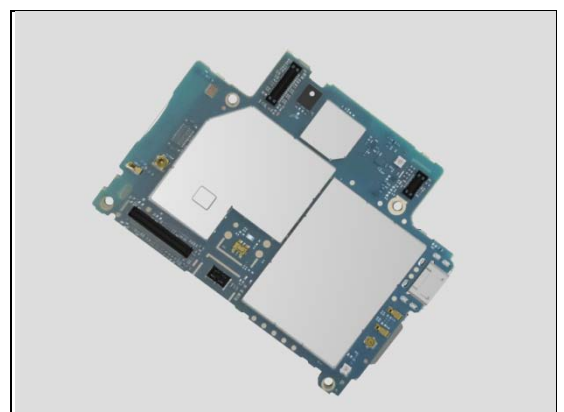
Inspect the FPC Audio Jack.

Action:

1. If the FPC Audio Jack is damaged – replace it.



4. Replace Main PBA.



Problem Areas

1.34 Data Communication

1.34.1 Data transfer via System Connector fails

Check:

Inspect the USB connector.

Action:

1. If dirty or oxidized – clean the connector.
2. Replace Main PBA.



Problem Areas

1.35 Water Resistance

1.35.1 Water Resistance fails

Check:

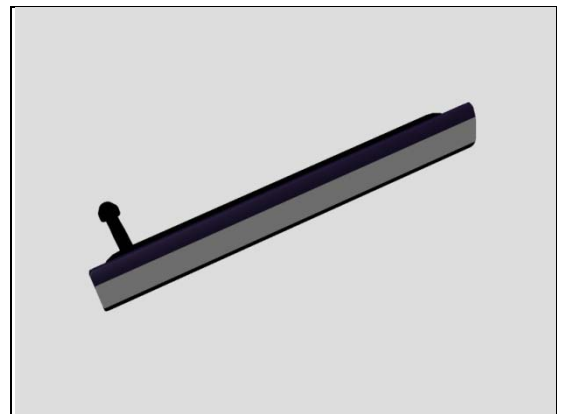
Inspect the Cap USB.

Action:

1. If dirty – clean it.
2. If not properly assembled – disassemble and reassemble.

3. If the Cap USB is damaged – replace it.

Run the Water Resistance Test again!



Check:

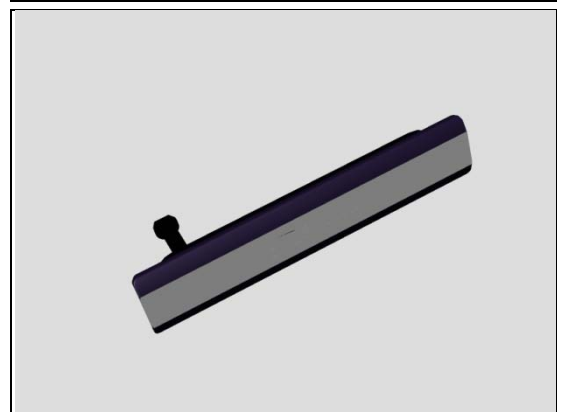
Inspect the Cap SD.

Action:

1. If dirty – clean it.
2. If not properly assembled – disassemble and reassemble.

3. If the Cap SD is damaged – replace it.

Run the Water Resistance Test again!



Problem Areas: Water Resistance

Check:

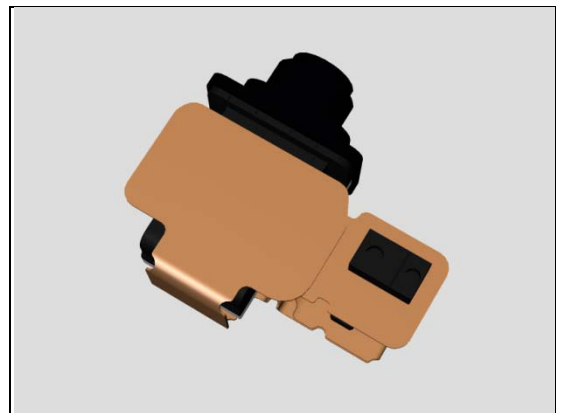
Seal the FPC Audio Jack with tape and run the Water Resistance Test. If the leakage is here, inspect the FPC Audio Jack.

Action:

1. If not properly assembled – disassemble and reassemble (with a new Adhesive Audio Jack).

2. If the FPC Audio Jack is damaged – replace it.

Run the Water Resistance Test again!



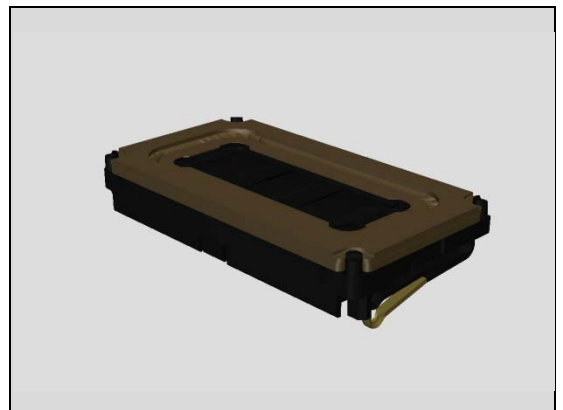
Check:

Seal the area around the Ear speaker with tape and run the Water Resistance Test. If the leakage is here, inspect the Top Speaker.

Action:

If not properly assembled or damaged – replace the Top Speaker (with a new Adhesive Earspeaker).

Run the Water Resistance Test again!



Problem Areas: Water Resistance

Check:

Seal the area around the Loudspeaker with tape and run the Water Resistance Test. If the leakage is here, inspect the Holder Loudspeaker and the Adhesive with mesh 14 x 5.

Action:

1. If the Adhesive with mesh 14 x 5 is damaged or unsealed – replace this adhesive.

Run the Water Resistance Test again!

Action:

2. If the Holder loudspeaker is causing the leakage – replace the Holder loudspeaker (with a new Adhesive with mesh 14 x 5).

Run the Water Resistance Test again!

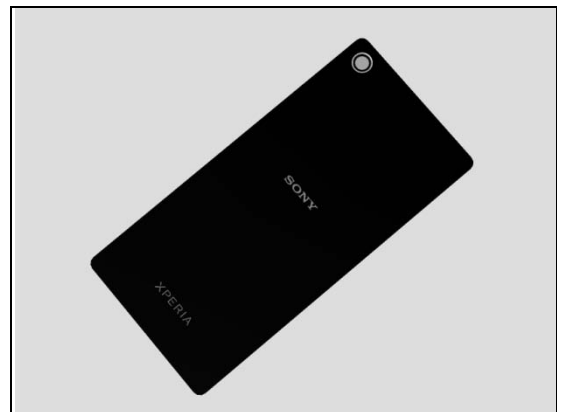
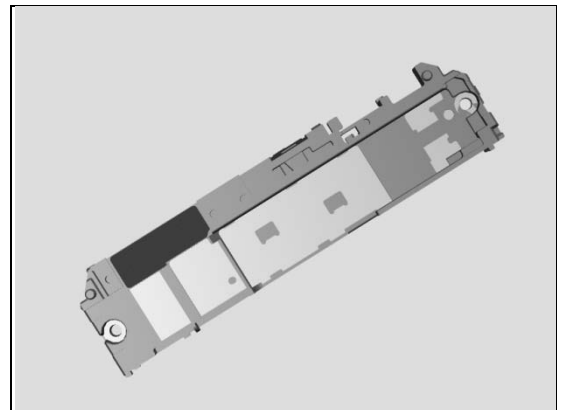
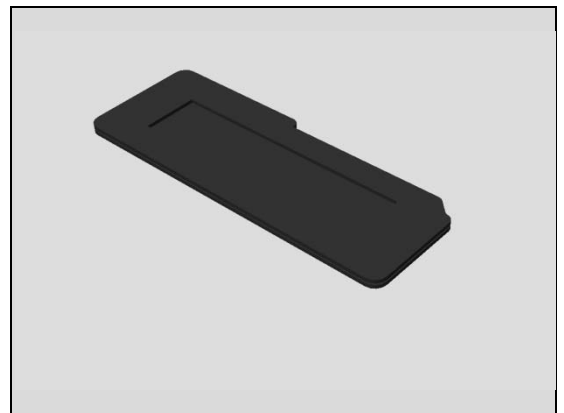
Check:

Inspect the edge of Panel Back for damage and gap.

Action:

1. If the edge of Panel Back has gap – reassembly it (with a new adhesive).
2. If the Panel Back is damaged – replace it.

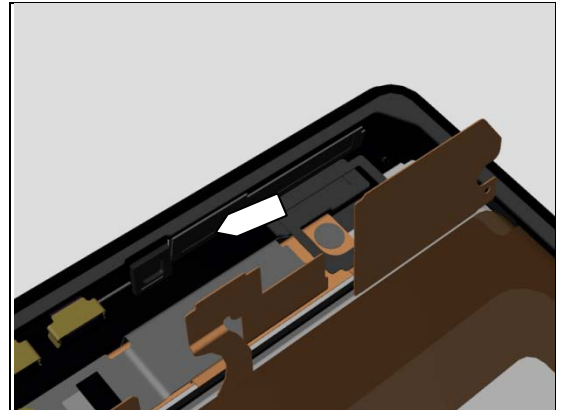
Run the Water Resistance Test again!



Problem Areas: Water Resistance

Check:

Inspect the film for water resistance check and 1st Mic Cushion.



Action:

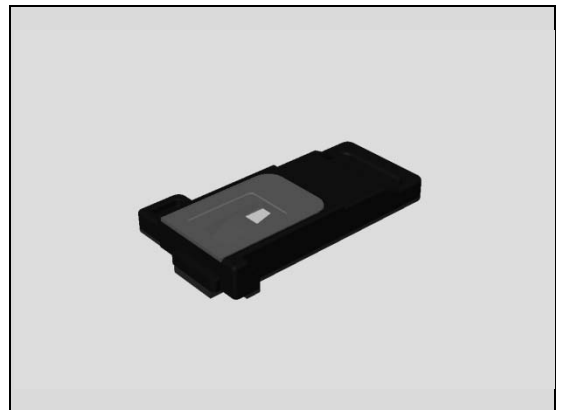
If damaged – replace Display Frame Assy.

Run the Water Resistance Test again!



Check:

Inspect the external port of the secondary microphone and the Holder 2nd Mic.



Action:

1. If the Holder 2nd Mic is damaged – replace it
2. If the Display Frame Assy is damaged – replace it.

Run the Water Resistance Test again!



Problem Areas: Water Resistance

Check:

Seal the unit around the Display with tape and run the Water Resistance Test. Inspect the edge of Display Frame Assy for damage and gap.



Seal the area around the Magnetic charger connector with tape and run the Water Resistance Test.



Action:

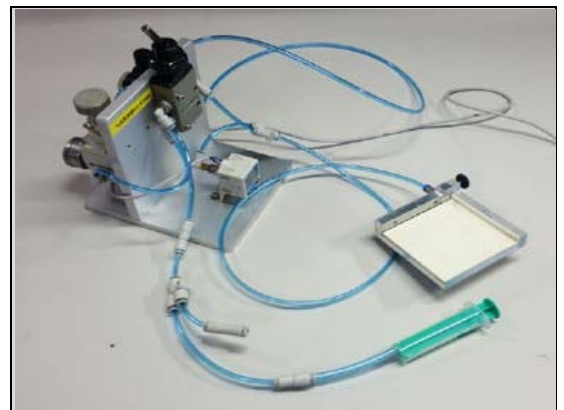
If the leakage is around the edge of Display Frame Assy, around the Magnetic charger connector or the Display Frame Assy is damaged – replace it.

Run the Water Resistance Test again!



The WRT Troubleshooting Equipment 1280-2408 could be used to speed up the trouble shooting procedure during location of the leakage.

Please see SI 20231-XXXXX and the Generic Repair Manual 1220-1333 rev 23



2 Revision History

Rev.	Date	Changes / Comments
1	2013-Mar-14	Initial release
2	2013-Mar-30	Descriptions and orders of the chapters updated.
3	2014-July-03	Sheet 1st MIC added,
4	2014-Sep-09	1.32.2 Battery will not charge by Magnetic Charging Dock updated with loose connector.